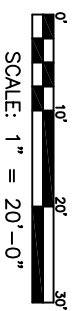
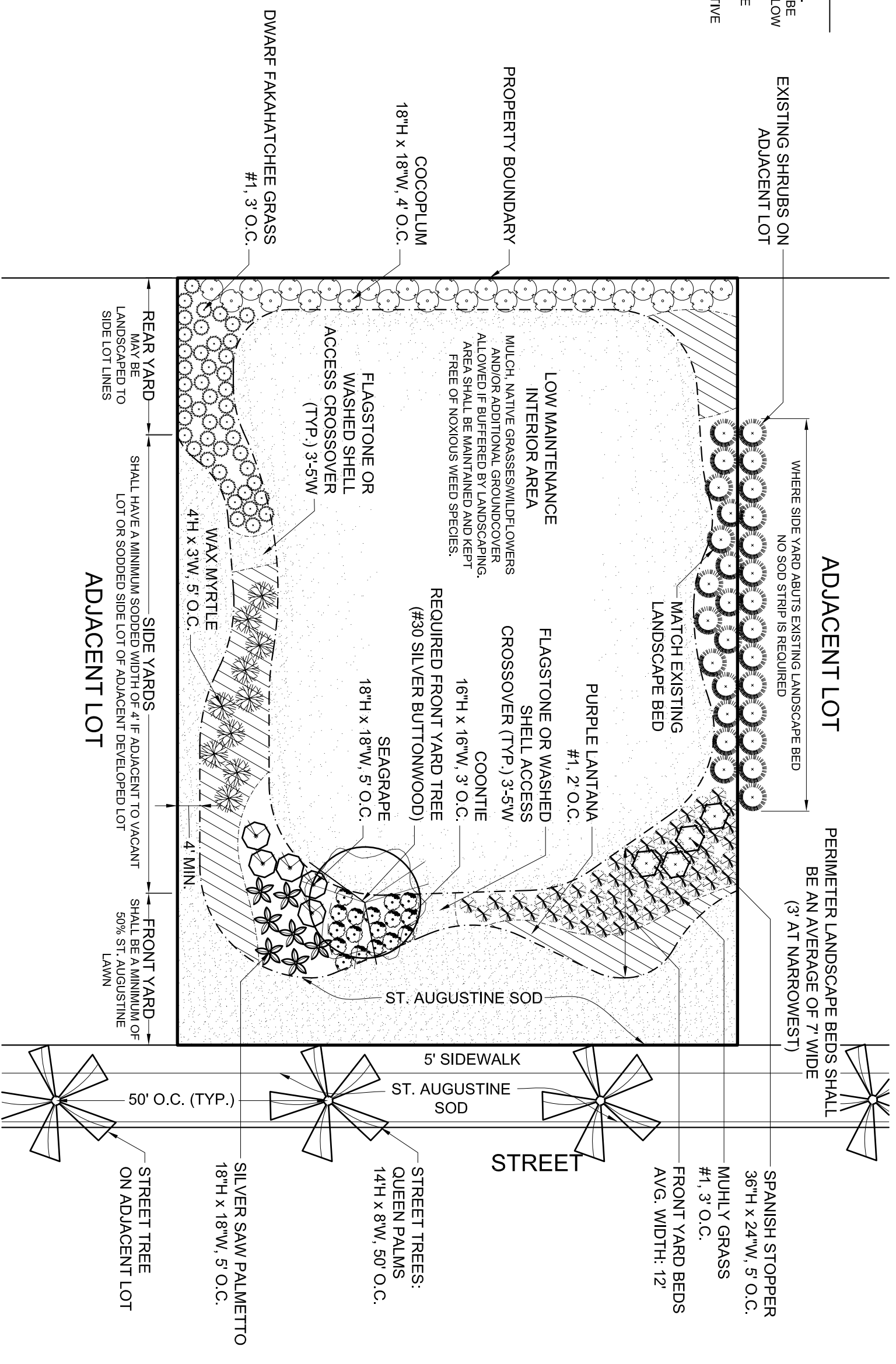


- NOTES:**
1. ALL PLANTS SHALL BE FLORIDA #1 OR BETTER.
  2. ALL LANDSCAPE BEDS SHALL HAVE 3" ORGANIC MULCH.
  3. ALL LANDSCAPE BEDS AND ST. AUGUSTINE SOD SHALL BE IRRIGATED. LANDSCAPE BEDS SHALL BE EQUIPPED WITH LOW VOLUME EMITTERS.
  4. THIS PLAN DEPICTS A CONCEPT THAT WOULD MEET THE MINIMUM REQUIREMENTS FOR THE FLORIDA-FRIENDLY LANDSCAPE OPTION FOR UNDEVELOPED LOTS. ALTERNATIVE PLANS MAY BE PROPOSED THAT EXCEED THESE SPECIFICATIONS.



Revisions:	Issue	Date
No.		

The designer hereby expressly reserves his copyright and other property rights in these plans. These plans and drawings are not to be reproduced, changed or copied in any form and manner without the designer's express written permission.

**EKISTICS DESIGN STUDIO**  
URBAN PLANNING LANDSCAPE ARCHITECTURE A P L L C  
P L L C

Post Office Box 270247  
Tampa, Florida 33688  
1202 West Linebaugh Avenue  
(813) 931-8040 932-3762 (fax)  
www.ekisticsdesignstudio.com

Signed	Date

Not Valid Unless Embossed With Seal

**FLORIDA-FRIENDLY LANDSCAPE OPTION**  
**ANDALUCIA UNDEVELOPED LOTS**  
APOLLO BEACH, FLORIDA  
PREPARED FOR: ANDALUCIA MASTER ASSOCIATION

Date:	Job No.
2008-01-24	
Spec:	Typ:
2008-01-24	
Location:	Ring:
HILLSBOROUGH COUNTY	
Designed:	Drawn:
TRL	RFP
Scale:	Checked:
1" = 20'-0"	TRL
Printed:	
2008-01-24	

Sheet No. **1** of 1